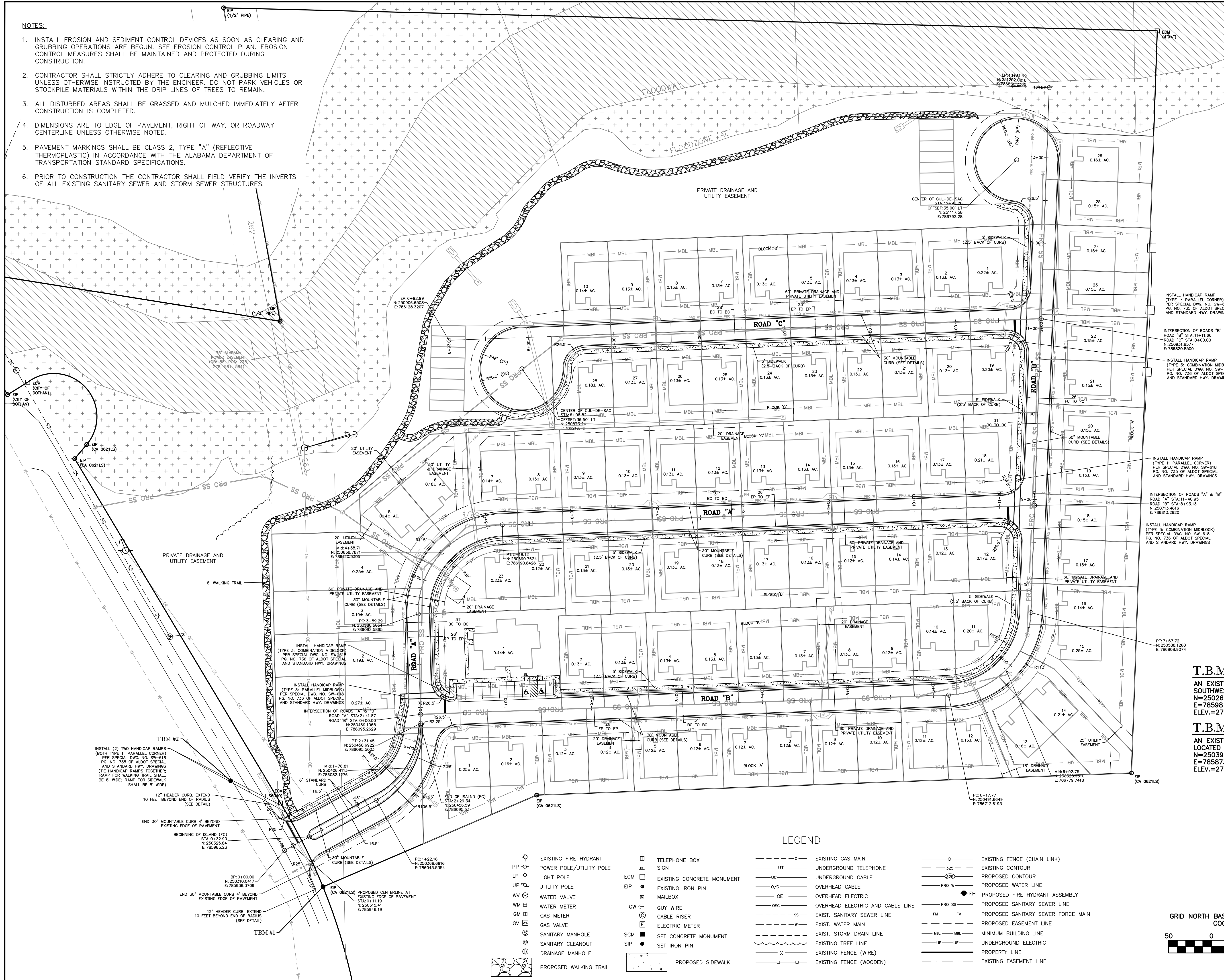


**NOTES:**

1. INSTALL EROSION AND SEDIMENT CONTROL DEVICES AS SOON AS CLEARING AND GRUBBING OPERATIONS ARE BEGUN. SEE EROSION CONTROL PLAN. EROSION CONTROL MEASURES SHALL BE MAINTAINED AND PROTECTED DURING CONSTRUCTION.
2. CONTRACTOR SHALL STRICTLY ADHERE TO CLEARING AND GRUBBING LIMITS UNLESS OTHERWISE INSTRUCTED BY THE ENGINEER. DO NOT PARK VEHICLES OR STOCKPILE MATERIALS WITHIN THE DRIP LINES OF TREES TO REMAIN.
3. ALL DISTURBED AREAS SHALL BE GRASSED AND MULCHED IMMEDIATELY AFTER CONSTRUCTION IS COMPLETED.
4. DIMENSIONS ARE TO EDGE OF PAVEMENT, RIGHT OF WAY, OR ROADWAY CENTERLINE UNLESS OTHERWISE NOTED.
5. PAVEMENT MARKINGS SHALL BE CLASS 2, TYPE "A" (REFLECTIVE THERMOPLASTIC) IN ACCORDANCE WITH THE ALABAMA DEPARTMENT OF TRANSPORTATION STANDARD SPECIFICATIONS.
6. PRIOR TO CONSTRUCTION THE CONTRACTOR SHALL FIELD VERIFY THE INVERTS OF ALL EXISTING SANITARY SEWER AND STORM SEWER STRUCTURES.



PROJECT No.  
0083-17  
DATE: JULY, 2018  
SCALE: 1"=50'

DRAWN BY:  
T. SCARBOROUGH  
APPROVED BY:  
L. BROWN

REVISIONS:

CONSTRUCTION PLANS FOR  
AVALON PLACE DUPLEXES  
CITY OF DOTHAN  
HOUSTON COUNTY, ALABAMA  
LAYOUT PLAN



AL CERT. OF AUTH.  
CA-1896E, CA-0621LS  
FL CERT. OF AUTH.  
26312-E, 7858-S  
GA CERT. OF AUTH.  
003129, LSF001156  
MS CERT. OF AUTH.  
E-00001825

SHEET 6  
OF 27

**T.B.M. #1**  
AN EXISTING IRON PIN LOCATED AT THE SOUTHWEST PROPERTY CORNER  
N=250267.4060  
E=785981.2260  
ELEV.=276.454

**T.B.M. #2**  
AN EXISTING NAIL IN ASPHALT LOCATED ACROSS MOORE ROAD  
N=250391.4530  
E=785873.1670  
ELEV.=274.330

**LEGEND**

- |   |   |
|---|---|
| <ul style="list-style-type: none"> <li>PP ○ EXISTING FIRE HYDRANT</li> <li>LP ○ POWER POLE/UTILITY POLE</li> <li>UP ○ LIGHT POLE</li> <li>UP ○ UTILITY POLE</li> <li>WM ○ WATER VALVE</li> <li>WM ○ WATER METER</li> <li>GM ○ GAS METER</li> <li>GV ○ GAS VALVE</li> <li>SM ○ SANITARY MANHOLE</li> <li>SC ○ SANITARY CLEANOUT</li> <li>DM ○ DRAINAGE MANHOLE</li> <li>ECM □ EXISTING CONCRETE MONUMENT</li> <li>EIP ○ EXISTING IRON PIN</li> <li>MB □ MAILBOX</li> <li>GW ○ GUY WIRE</li> <li>CR ○ CABLE RISER</li> <li>EM ○ ELECTRIC METER</li> <li>SCM ■ SET CONCRETE MONUMENT</li> <li>SIP ● SET IRON PIN</li> <li>○ EXISTING FENCE (CHAIN LINK)</li> <li>- - - - - EXISTING CONTOUR</li> <li>- - - - - PROPOSED CONTOUR</li> <li>- - - - - PROPOSED WATER LINE</li> <li>- - - - - PROPOSED FIRE HYDRANT ASSEMBLY</li> <li>- - - - - PROPOSED SANITARY SEWER LINE</li> <li>- - - - - PROPOSED SANITARY SEWER FORCE MAIN</li> <li>- - - - - PROPOSED EASEMENT LINE</li> <li>- - - - - EXIST. WATER MAIN</li> <li>- - - - - EXIST. SANITARY SEWER LINE</li> <li>- - - - - EXIST. STORM DRAIN LINE</li> <li>- - - - - EXISTING TREE LINE</li> <li>- - - - - EXISTING FENCE (WIRE)</li> <li>- - - - - EXISTING FENCE (WOODEN)</li> <li>○ ○ ○ ○ ○ EXISTING GAS MAIN</li> <li>○ ○ ○ ○ ○ UNDERGROUND TELEPHONE</li> <li>○ ○ ○ ○ ○ UNDERGROUND CABLE</li> <li>○ ○ ○ ○ ○ OVERHEAD CABLE</li> <li>○ ○ ○ ○ ○ OVERHEAD ELECTRIC</li> <li>○ ○ ○ ○ ○ OVERHEAD ELECTRIC AND CABLE LINE</li> <li>○ ○ ○ ○ ○ EXIST. SANITARY SEWER LINE</li> <li>○ ○ ○ ○ ○ EXIST. WATER MAIN</li> <li>○ ○ ○ ○ ○ EXIST. STORM DRAIN LINE</li> <li>○ ○ ○ ○ ○ EXISTING EASEMENT LINE</li> <li>○ ○ ○ ○ ○ UNDERGROUND ELECTRIC</li> <li>○ ○ ○ ○ ○ PROPERTY LINE</li> <li>○ ○ ○ ○ ○ EXISTING EASEMENT LINE</li> </ul> | <ul style="list-style-type: none"> <li>○ EXISTING FENCE (CHAIN LINK)</li> <li>- - - - - EXISTING CONTOUR</li> <li>- - - - - PROPOSED CONTOUR</li> <li>- - - - - PROPOSED WATER LINE</li> <li>- - - - - PROPOSED FIRE HYDRANT ASSEMBLY</li> <li>- - - - - PROPOSED SANITARY SEWER LINE</li> <li>- - - - - PROPOSED SANITARY SEWER FORCE MAIN</li> <li>- - - - - PROPOSED EASEMENT LINE</li> <li>- - - - - EXIST. WATER MAIN</li> <li>- - - - - EXIST. SANITARY SEWER LINE</li> <li>- - - - - EXIST. STORM DRAIN LINE</li> <li>- - - - - EXISTING EASEMENT LINE</li> <li>- - - - - UNDERGROUND ELECTRIC</li> <li>- - - - - PROPERTY LINE</li> <li>- - - - - EXISTING EASEMENT LINE</li> </ul> |
|---|---|

